

# Eco II Xpand

## Two-Story Modular Classroom

The only Florida approved education two-story modular classroom offered for lease and purchase.



**Mobile Modular's Eco II Xpand is an efficient, cost effective solution to maximize available space.** Engineered to expand and reconfigure as needs change, the Eco II Xpand is the answer to projected growth and budget constraints.

## Unsure what your future space needs will be?

We offer the option of starting with a single story, and adding the second story as needed in the future.

The Eco II Xpand offers an accelerated installation schedule as compared to conventional construction. The Eco II Xpand delivers the right product for your permanent or temporary project needs.

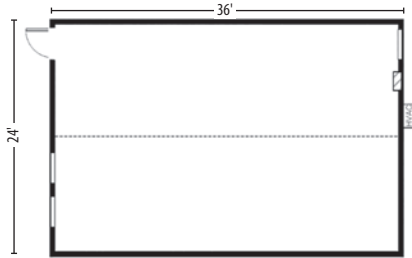
800.944.3442 • [mobilemodular.com](http://mobilemodular.com)

1100 State Hwy 559, Auburndale, FL 33823-9356

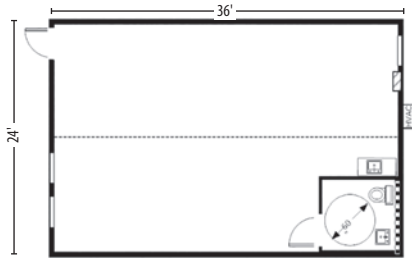


## CLASSROOM BUILDINGS

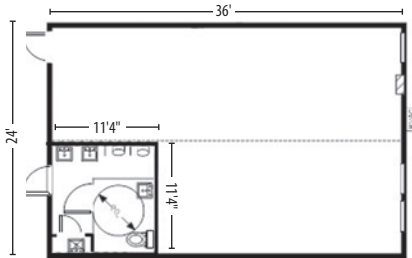
24' x 36' Classroom Eco II Xpand – Model 2093



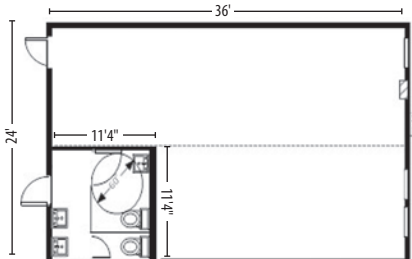
24' x 36' Classroom Eco II Xpand – Model 2094



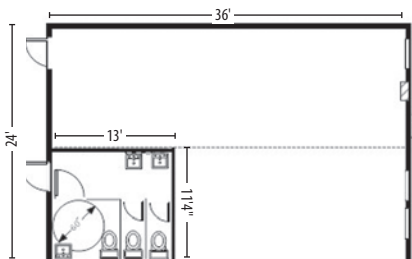
24' x 36' Male 3 Fixture RR Eco II Xpand – Model 2095



24' x 36' Female 2 Fixture RR Eco II Xpand – Model 2096



24' x 36' Female 3 Fixture RR Eco II Xpand – Model 2097



## Building Set Capabilities

- Classroom buildings can be set at a minimal threshold height, eliminating the need for ramps and/or stairs
- One-hour fire rated side walls allow classrooms to be set next to one another, creating a classroom wing

## Interior Features

- Energy efficient HVAC with programmable thermostat
- Ducted air supply distributes air quietly, efficiently and evenly to help create a superior learning environment
- Rigid floor system consisting of perimeter steel chassis with steel purlins and R-21 insulation further enhances the quiet and comfortable learning environment
- Floor finished with high quality carpet
- Drop ceiling with 2'x2' acoustic tiles

## Exterior Features

- Walls are steel stud construction with Structural Insulated Panels (SIP) and covered with an attractive stucco finish.
- R-19 insulation and Vinyl Coated Gypsum makes for an energy efficient wall assembly
- Mono-pitch roof design with 8" rear overhang diverts rainwater from draining onto exterior openings
- Design meets 170 MPH Ultimate Design Wind Speed and can be used in all Florida wind zones, including Miami-Dade and Broward counties.

## Optional Features

- Custom configurations
- Stairs
- Lift
- Railings
- Foundation plans for classrooms as well as walkways, stairs and lift
- Concrete foundation
- Crane service
- Set and hauling crews

\*All dimensions are nominal. Unless noted, equipment and related furnishing, finishes, accessories and appliances provided are previously leased. Materials, dimensions and specifications vary.

Fixture count, floorplans and available sizes may vary by region. Please contact your modular building expert for further information. Specifications are subject to change without notice.

800.944.3442 • [mobilemodular.com](http://mobilemodular.com)

1100 State Hwy 559, Auburndale, FL 33823-9356

