



MOBILE MODULAR CASE STUDY

An under-utilized corner of a popular shopping mall lays foundation for colorful, fresh preschool setting.



PROJECT PROFILE

Patti's Pre School, CA.

Project Partners:

Days to Complete: 153

Building Use:

Square Footage: 7,200



MOBILE MODULAR

Our mission is to provide each customer with a building designed to meet their specific needs and a level of individual service that laps our closest competitor. We believe we are the most knowledgeable, resourceful and capable company in the industry today.

For more information visit:

www.mobilemodularrents.com

Challenge

Huntington Beach, CA – Patti Young had a vision. Her dream of providing a high-quality, nurturing environment for children required a unique space that encouraged her students to grow and learn. Proving to be a great location for neighborhood children, an unused corner of a shopping center, however, provided a challenge to site layout and building orientation. Patti was committed to designing a space that blended with the neighborhood aesthetic and offered easy access, yet needed to deliver an open, spacious environment that allowed students and teachers to thrive.

Solution

Patti chose local modular building vendor, Mobile Module, to help create a custom, affordable solution. Working closely with the Mobile Modular design team to select the most flexible standard buildings, Patti was presented with a staggered configuration that also doubled as an urban infill solution. Two (2) 60' x 60' modular units were situated with a 12' offset to add architectural interest and conform with site conditions. Design elements from the shopping center were incorporated to provide harmony with existing structures and included a tower, trellises and a covered entryway.

Geometric shapes simulate building blocks for added appeal. The complimentary color scheme selected for the stucco exterior portrays a fresh and playful look in keeping with the building's use and setting. The final structure housed six (6) self-contained classrooms. The elaborate facade presents a permanent appearance in a high-end neighborhood.

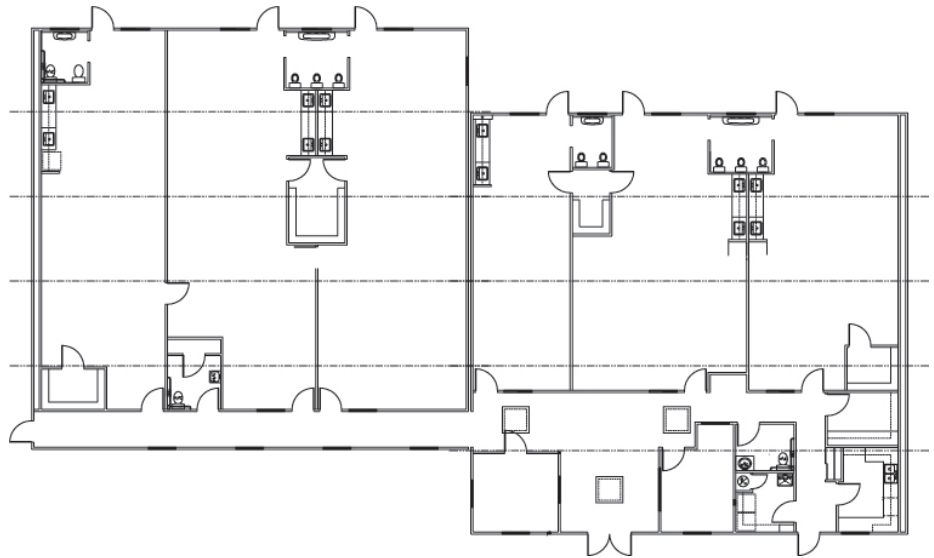
The final design was approved in a very restrictive code environment. In all, six (6) classrooms were readied for occupancy with individual work areas, sinks, and restroom facilities - even a kitchen for serving meals. Counter and cabinet heights were adjusted to be child-friendly. The majority of the fire sprinkler system and fire alarm infrastructure was installed prior to installation in order to facilitate quicker installation and occupancy on site. To further support administrative areas, a 100# floor load was added. A double top plate and rim joist provided blocking for site built trellis support. Other amenities included an alarm system with security, fire, water, smoke, heat, and PIV/OS&Y tamper sensors.



YOUR PROJECT – OUR COMMITMENT

Mobile Modular delivers the most adaptable modular buildings systems that keep today’s most challenging educational projects on time and on budget.

For more information visit:
www.mobilemodularrents.com



A stucco exterior finish was utilized in highly visible areas, and smart panel exterior siding was applied in less visible areas for a more cost-effective exterior treatment. The open, spacious interior featured larger window sizes and multiple skylights for natural lighting. Dual glazed exterior windows, insulated exterior doors and automatic door closures help keep energy costs down. The HVAC system (with electronic thermostats) was separately zoned for each classroom, allowing air conditioning to be turned off in rooms not in use – saving utility costs.

“NEED QUOTE’S

Success

With Mobile Modular’s technical innovation, design and state-of-the-art modular engineering, Patti was able to welcome students to a brand new 7,200 sq. ft. childcare facility. Students, parents and teachers enjoyed the added space, use of natural lighting and bright, fun color schemes. Patti can continue to deliver on her promise of a warm, loving environment where children thrive.

