

Mobile Modular

Permanent Modular Classrooms



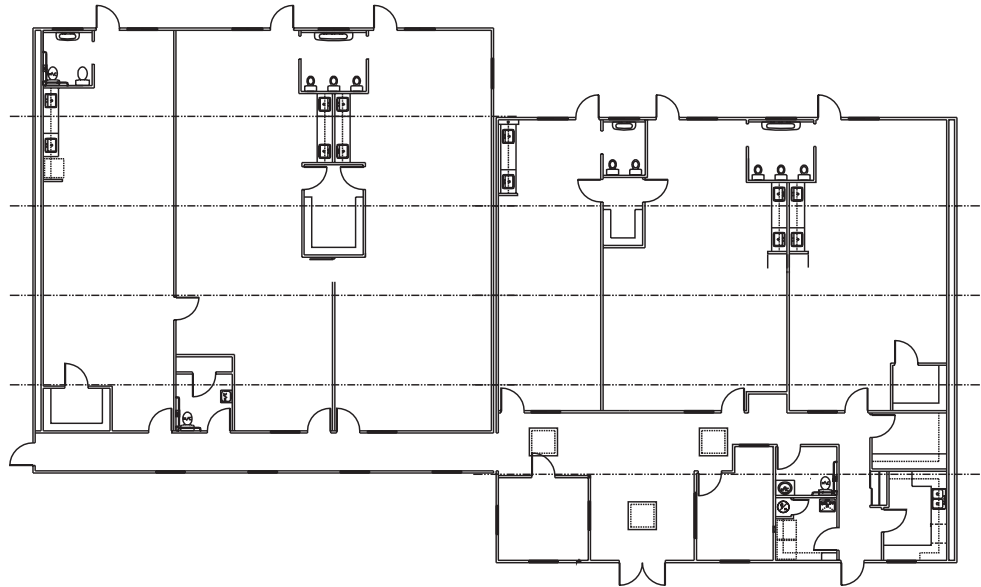
Patti's Preschool



Modular Configuration: (10) 12' x 60'

Total Square Footage: 7200 sq. ft.

Days to Complete: 153



Design

An unused corner of a shopping center pad provided a challenge to site layout and building orientation. Two 60' x 60' modular units were situated with a 12' offset to add architectural interest and conform with site conditions. Design elements from the shopping center were incorporated to provide harmony with existing structures and include a tower, trellises and a covered entryway. Geometric shapes simulate building blocks, for added kid appeal. The complimentary color scheme selected for the stucco exterior portrays a fresh and playful look in keeping with the building's use and setting. The final structure houses six self-contained classrooms. The elaborate facade presents a permanent appearance in a high-end neighborhood.

Technical Innovation

The use of standard size building modules in a staggered configuration put an unusable corner of the shopping center back as an urban infill solution. The final design was approved in a very restrictive code environment. In all, six classrooms were readied for occupancy with individual work areas, sinks, and restroom facilities - even a kitchen for serving meals. Counter and cabinet heights were adjusted to be child-friendly. The majority of the fire sprinkler system and fire alarm infrastructure was installed at the factory to facilitate a quicker installation on site. To further support administrative areas, a 100# floor load was added. A double top plate and rim joist provided blocking for site built trellis support. Other amenities included an alarm system with security, fire, water, smoke, heat, and PIV/OS&Y tamper sensors.

Value Engineering and Energy Efficiency Measures

A stucco exterior finish was utilized in highly visible areas, and smart panel exterior siding was applied in less visible areas for a more cost-effective exterior treatment. The open, spacious interior featured larger window size and multiple skylights for natural lighting. Dual glazed exterior windows, insulated exterior doors, and automatic door closures help keep energy costs down. The HVAC system (with electronic thermostats) was separately zoned for each classroom, allowing air conditioning to be turned off in rooms not in use.



Mobile Modular Management Corporation
5700 Las Positas Rd.
Livermore, CA 94551
800-944-3442
www.MobileModularRents.com