

CampusMaker Hybrid[®]

Modular Classroom



CampusMaker Hybrid[®] – the state-of-the-art eco-friendly modular classroom.



A modular classroom with a **smaller carbon footprint.**

CampusMaker Hybrid® – Modular Classroom

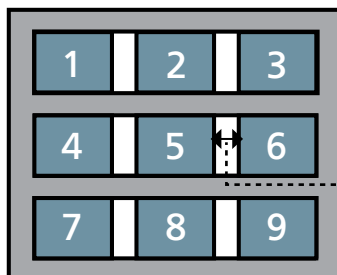
Save Land, Money and Energy

Mobile Modular’s CampusMaker Hybrid® saves you money by utilizing a highly efficient HVAC, along with an energy management system. Higher insulation values, a Cool Roof, T8 electronic lighting, dual pane windows all work in concert to **reduce energy consumption by as much as 50%**. The doors and windows are strategically placed on the end walls to allow buildings to be installed side-by-side to one another, resulting in better land utilization than traditional portables.

Expecting the cost of the Hybrid to be astronomical?

Mobile Modular’s Hybrid saves money in so many ways that it is cost competitive with traditional inefficient traditional portable classrooms. Want proof? Contact your Mobile Modular Sales Specialist today.

Traditional Classrooms Layout

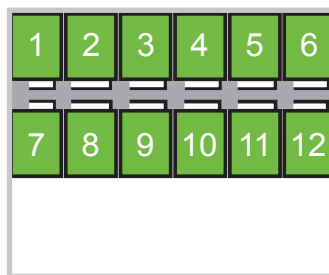


Traditional portable classrooms require a minimum of 10' 0" separation between classrooms.

10' 0" separation

*Typical site plan, not to scale

CampusMaker Hybrid® Layout



The CampusMaker Hybrid® modular classrooms installed side-by-side

*Typical site plan, not to scale

Energy Efficiency & Reducing Life Cycle Costs

Sustainable and customized learning environments.

As school systems face increasing financial pressures, Mobile Modular helps alleviate some of these pains by providing up-front and long term cost savings.

Energy Savings

Our highly efficient HVAC unit comes with a heat pump, an energy management system, fully ducted supply and return air; making it both very efficient AND quiet. This makes teachers, students and the maintenance department happy.



Intelligent energy management system

The system will automatically learn and memorize the occupancy patterns of the classroom and the temperature preferences of the occupant. During unoccupied times the HVAC system is either turned off or briefly dehumidifies. During occupied times temperature preferences are memorized with allowance for individual override and automatic restoration. No longer will your HVAC units run all night, all weekend, or all summer. Imagine the savings!

Maximize Land Utilization

In light of today's economic climate and lack of land availability, Mobile Modular has designed the CampusMaker Hybrid® classroom to be installed side-by-side which results in better land utilization. Up to 33% over traditional portable classrooms.



Reduce Operating Expenses

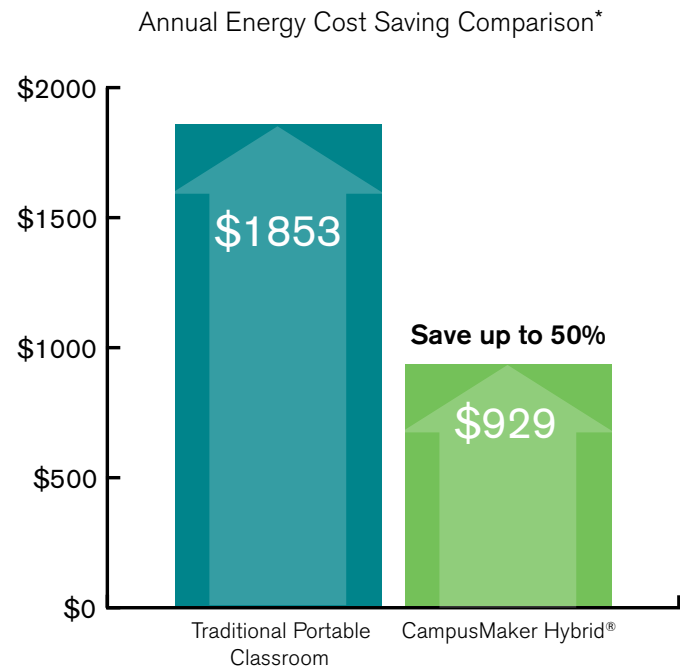
The Campus Maker Hybrid® has been designed to reduce operating costs through it's ability to be set low to the ground. This lower floor height dramatically reduces operating expenses by:

- Fewer foundation anchors
- Requiring No skirting
- Eliminates or significantly reduces ramps and decking
- Reducing utility runs and connections
- Vinyl Covered Gypsum interior walls provide an easy to clean and durable surface
- Installing easy to replace glueless carpet tiles
- End wall doors and windows allow for side-by-side placement reducing land usage
- A Hardie Panel™ exterior siding provides decades of low maintenance use



Let us take care of all of your space needs.

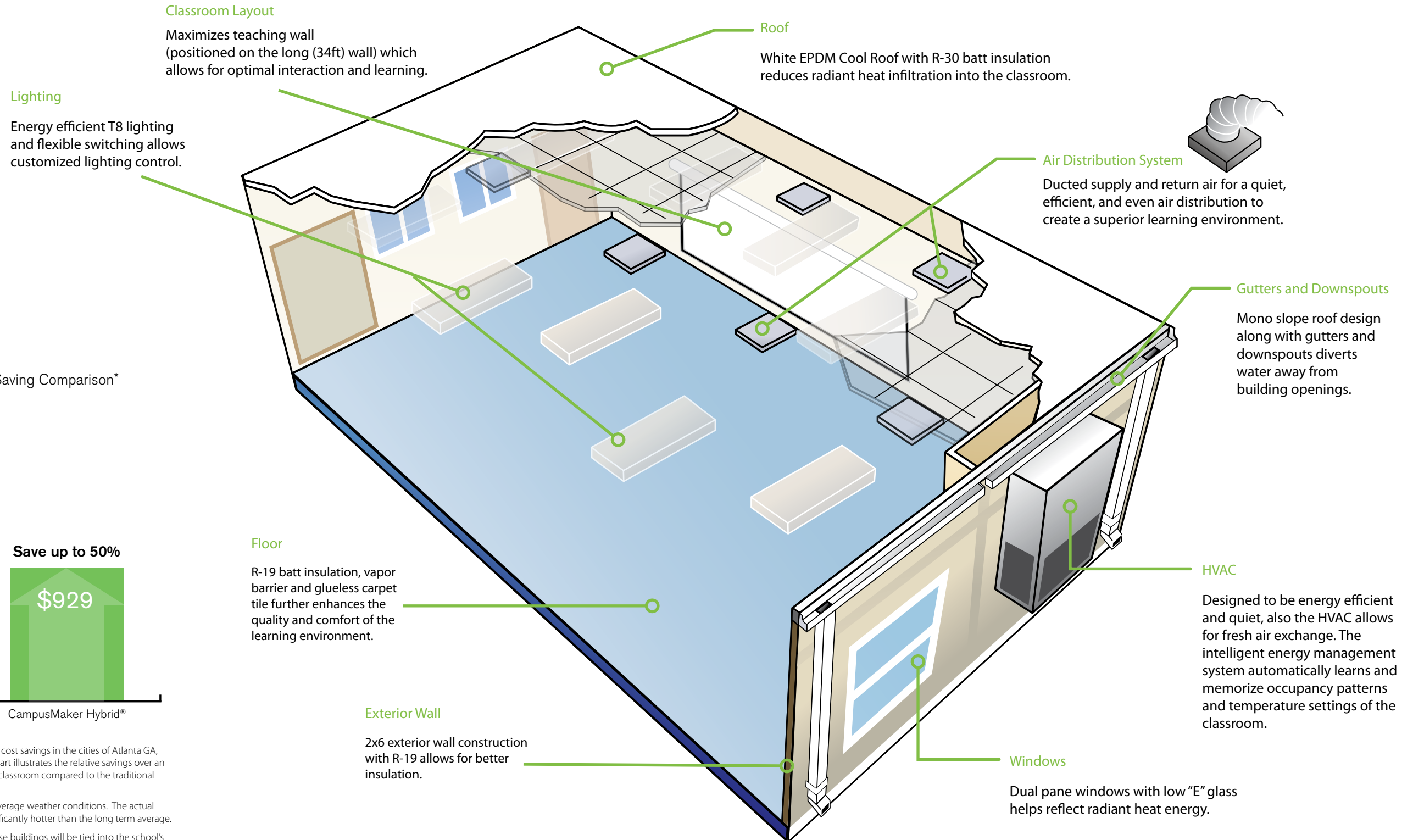
The CampusMaker Hybrid® modular classroom reflects the requirements for the 21st century teaching environment. It is designed to provide students and teachers the superior learning environment demanded in the industry.



*The cost comparison is an average annual energy cost savings in the cities of Atlanta GA, Charlotte NC, Raleigh NC and Baltimore MD. The chart illustrates the relative savings over an entire year for the CampusMaker® Hybrid modular classroom compared to the traditional portable classroom.

The data used in this analysis is based on 25-year average weather conditions. The actual weather conditions in recent years have been significantly hotter than the long term average.

The cost savings reflected in the chart assumes these buildings will be tied into the school's existing electrical service and only the energy charge is considered. It is possible the modular classrooms will add to the demand charges on the school's utility bill, resulting in greater energy savings by the CampusMaker Hybrid® modular classroom.





Mobile Modular Management Corporation

Mid Atlantic Regional Office
4301-C Stuart Andrew Blvd.
Charlotte, NC 28217

Georgia Sales Office
P.O. Box 151
3300 Hamilton Mill Rd., Suite 102
Buford, GA 30519

Maryland - Washington D.C.
& Virginia Sales Office
15 Churchville Rd., Suite 143
Bel Air, MD 21014

North Carolina Sales Office
4301-C Stuart Andrew Blvd.
Charlotte, NC 28217

800.944.3442

www.MobileModularRents.com

Copyright © 2010 by McGrath RentCorp. All Rights Reserved.